



Integration of switch 2000 series devices in TIA Portal version 15

Quickstart



Quickstart

Integration of switch 2000 series devices in TIA Portal version 15

UM EN QS FL SWITCH 2000 TIA15, Revision 00

2019-04-29

This user manual is valid for:

| Designation | Order No. | Designation | Order No. |
|-------------------------|-----------|--------------------------|-----------|
| FL SWITCH 2208 PN | 1044024 | FL SWITCH 2206-2SFX PN | 1044028 |
| FL SWITCH 2216 PN | 1044029 | FL SWITCH 2214-2SFX PN | 1044030 |
| FL SWITCH 2308 PN | 1009220 | FL SWITCH 2306-2SFP PN | 1009222 |
| FL SWITCH 2316 PN | 1031673 | FL SWITCH 2314-2SFP PN | 1031683 |
| FL SWITCH 2205 | 2702326 | FL SWITCH 2208 | 2702327 |
| FL SWITCH 2207-FX | 2702328 | FL SWITCH 2207-FX SM | 2702329 |
| FL SWITCH 2206-2FX | 2702330 | FL SWITCH 2206-2FX SM | 2702331 |
| FL SWITCH 2206-2FX ST | 2702332 | FL SWITCH 2206-2FX SM ST | 2702333 |
| FL SWITCH 2206-2SFX | 2702969 | FL SWITCH 2204-2TC-2SFX | 2702334 |
| FL SWITCH 2208-2SFX | 2702871 | FL SWITCH 2312-2TC-2SFP | 2702910 |
| FL SWITCH 2208C | 1095627 | FL SWITCH 2206C-2FX | 1095628 |
| FL SWITCH 2216 | 2702904 | FL SWITCH 2214-2FX | 2702905 |
| FL SWITCH 2214-2FX SM | 2702906 | FL SWITCH 2214-2SFX | 1006188 |
| FL SWITCH 2212-2TC-2SFX | 2702907 | FL SWITCH 2314-2SFP | 1006191 |
| FL SWITCH 2308 | 2702652 | FL SWITCH 2306-2SFP | 2702970 |
| FL SWITCH 2304-2GC-2SFP | 2702653 | FL SWITCH 2308-2SFP | 2702674 |
| FL SWITCH 2316 | 2702909 | | |

108960_en_00

Table of contents

| | | |
|---|---|----|
| 1 | Introduction | 5 |
| 2 | Integration of GSDML files | 6 |
| 3 | Integrating the correct switch into the project | 7 |
| 4 | Switch configuration | 10 |

1 Introduction

This quick start guide shows step by step how you can integrate PROFINET-capable switches of the 2000 series into the Siemens TIA Portal Version 15. This makes it possible to use PROFINET benefits such as device configuration and monitoring. PHOENIX CONTACT GmbH & Co. KG offers objects for configuration and diagnostics that by far exceed the PROFINET standard.



The quick start guide applies for switches of the models 2200, 2300 or higher. Switches of this series can also be integrated if their product name does not contain "PN". For these devices, the device mode has to be set to PROFINET. This is done via the web interface or via the mode button. For additional information, refer to the user manual of the SWITCH 2000 series. The user manual is available for download at phoenixcontact.net/products.

2 Integration of GSDML files

1. Start the manager for GSDML files.

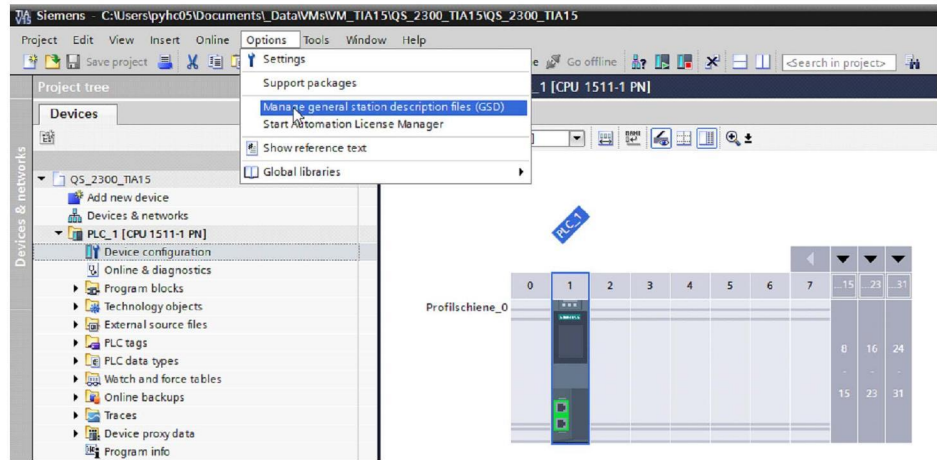


Figure 2-1 Opening the GSDML manager

2. Search for the matching GSDML files on your system and install them with a click on the "Install" button.

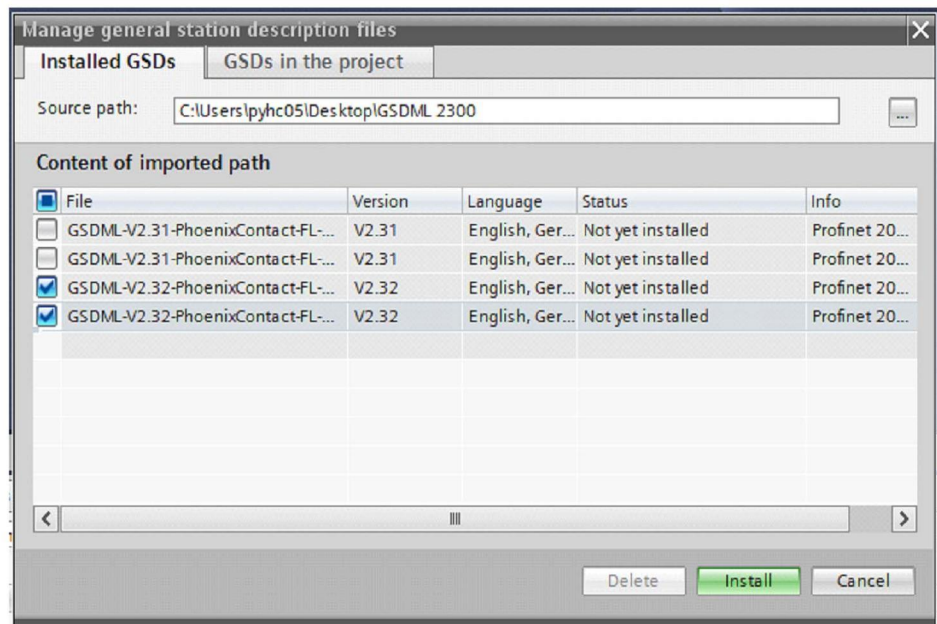


Figure 2-2 GSDML manager

3 Integrating the correct switch into the project

1. In the “Project tree”, select “Device configuration”.

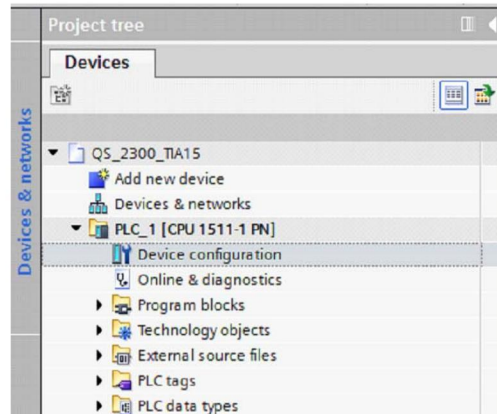


Figure 3-1 “Project tree”

2. Open the “Hardware catalog” and select the correct switch.

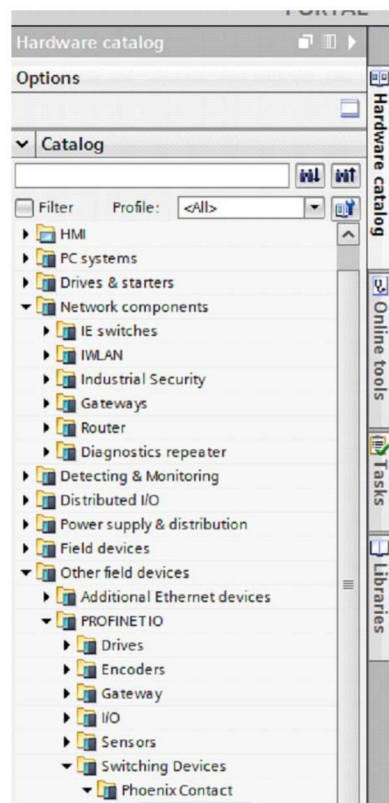


Figure 3-2 “Hardware catalog”

3. Drag and drop the switch into the “Network view”.

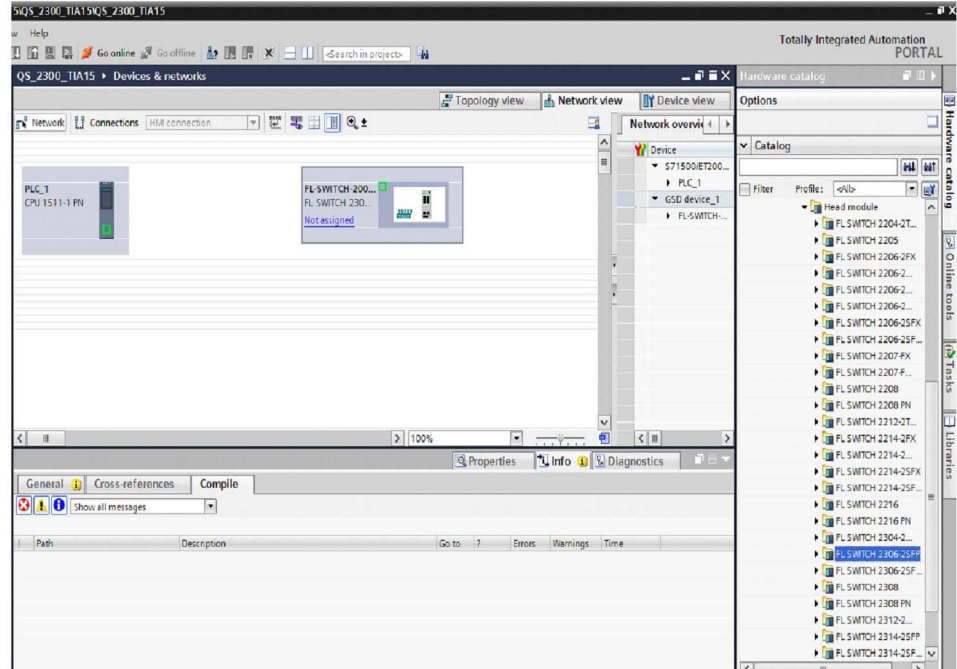


Figure 3-3 “Network view”

4. In the “Network view”, connect the switch to the controller.

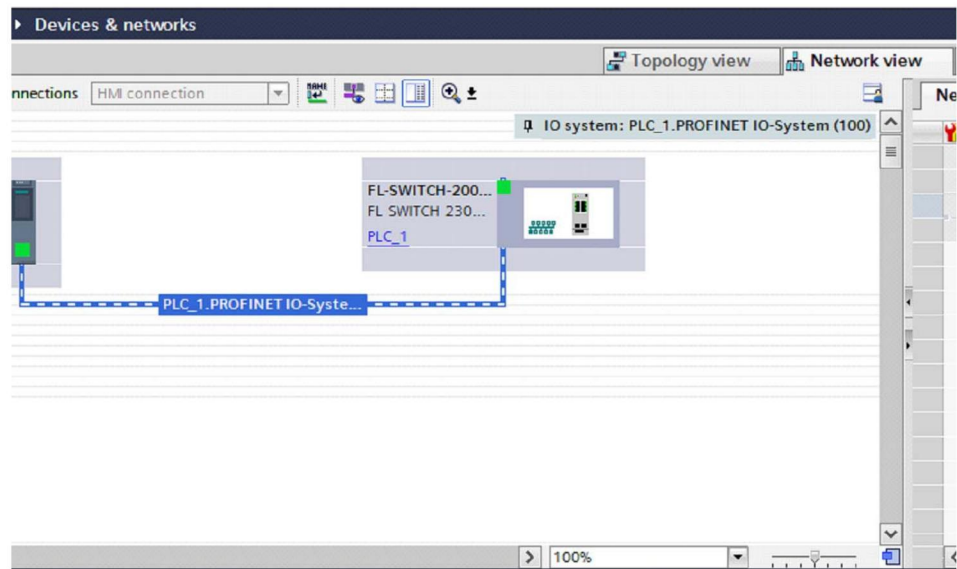


Figure 3-4 Connecting the devices in “Network view”

5. Switch to the “Topology view” tab and connect the switch to the controller.

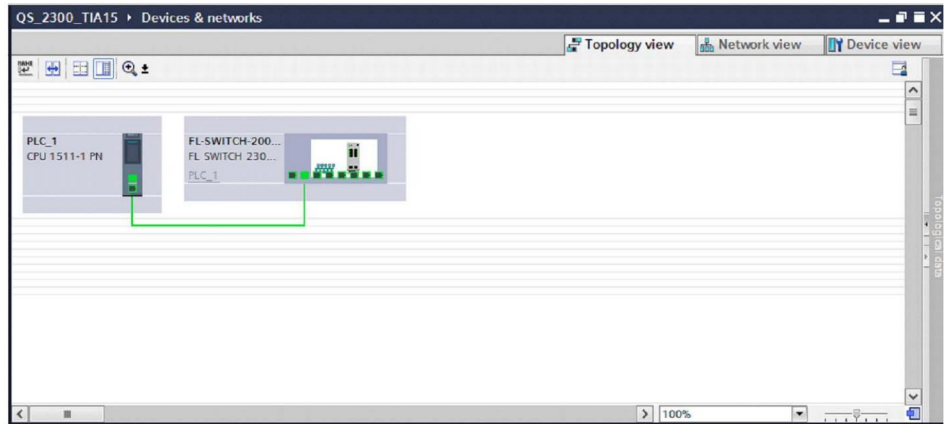


Figure 3-5 “Topology view”

4 Switch configuration

Go to the “Device view” tab. Here, you can parameterize the switch. The controller sends the parameters to the switch as soon as the latter has booted.

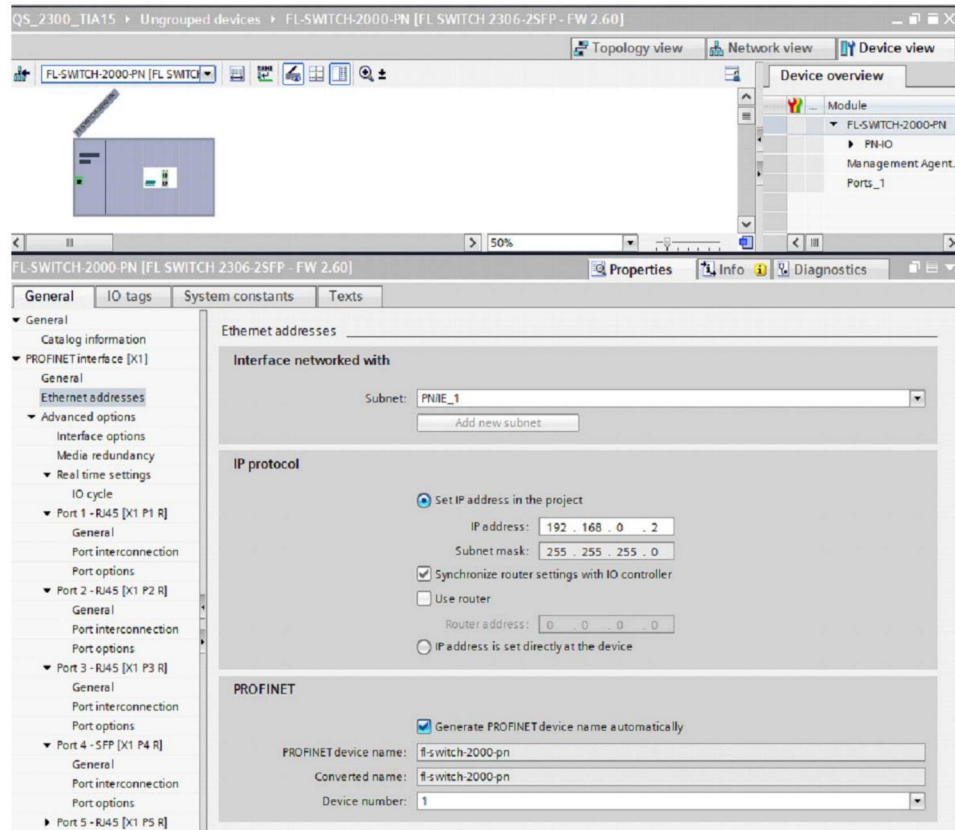


Figure 4-1 “Device view”

For additional settings, use the “Management Agent” or “Port” slot. Here, functions that exceed the PROFINET standard as well as the standards of most competitors are available.

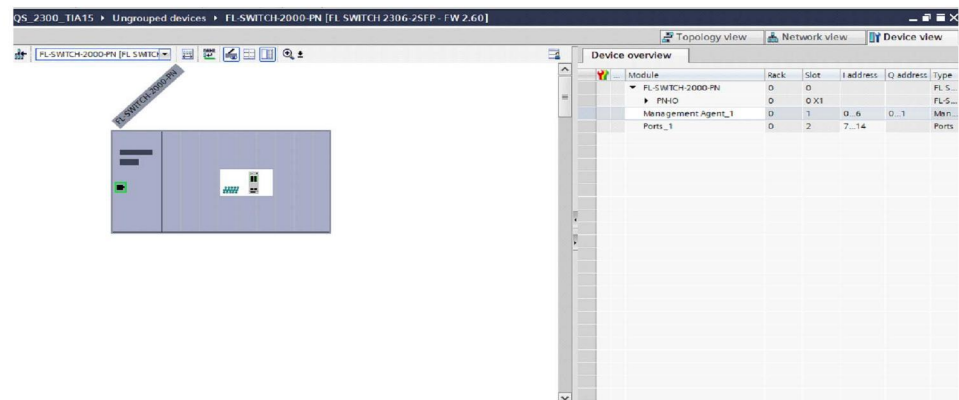


Figure 4-2 “Management Agent” slot in device view

The Management Agent slot provides additional configuration options such as RSTP configuration, configuration of the user interface and alarms:

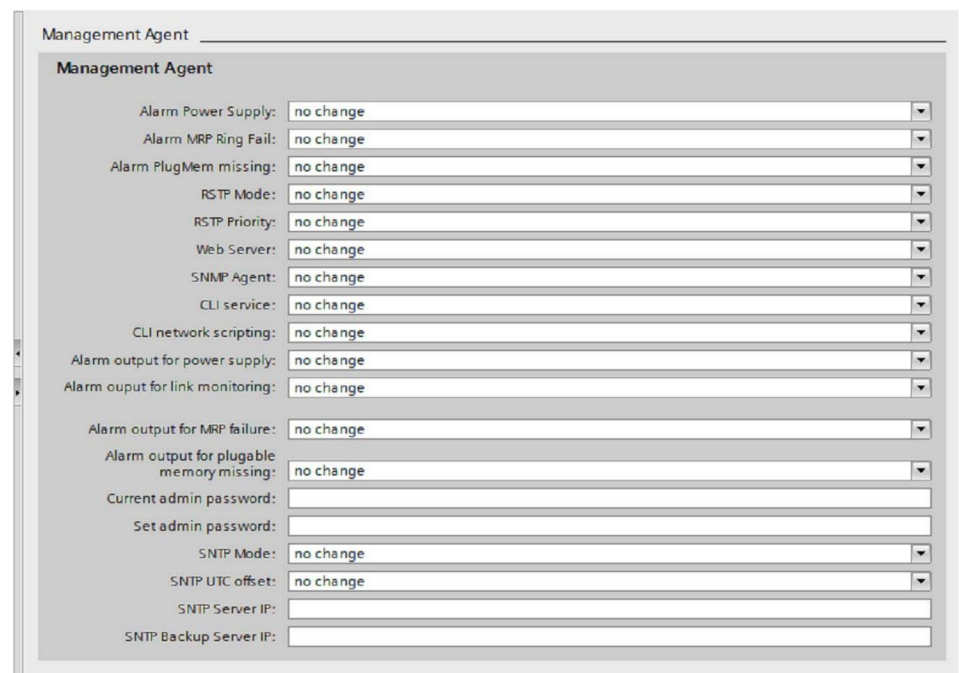


Figure 4-3 Parameters in “Management Agent” slot

On the Port slot, port-specific configurations can be implemented:

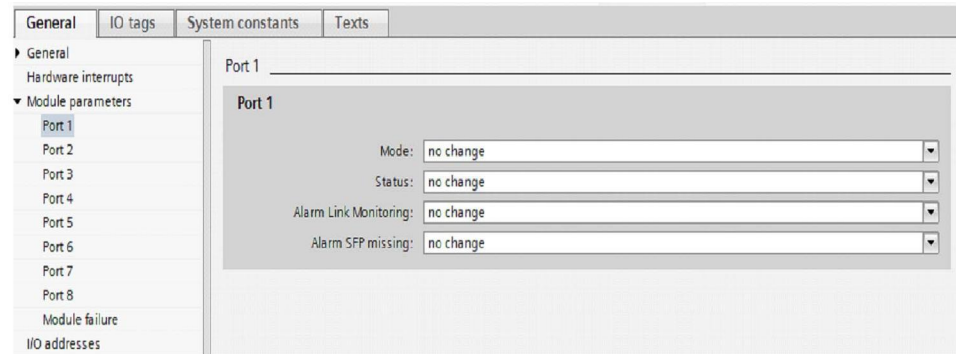


Figure 4-4 Parameters in “Port” slot

Please observe the following notes

General terms and conditions of use for technical documentation

Phoenix Contact reserves the right to alter, correct, and/or improve the technical documentation and the products described in the technical documentation at its own discretion and without giving prior notice, insofar as this is reasonable for the user. The same applies to any technical changes that serve the purpose of technical progress.

The receipt of technical documentation (in particular user documentation) does not constitute any further duty on the part of Phoenix Contact to furnish information on modifications to products and/or technical documentation. You are responsible to verify the suitability and intended use of the products in your specific application, in particular with regard to observing the applicable standards and regulations. All information made available in the technical data is supplied without any accompanying guarantee, whether expressly mentioned, implied or tacitly assumed.

In general, the provisions of the current standard Terms and Conditions of Phoenix Contact apply exclusively, in particular as concerns any warranty liability.

This manual, including all illustrations contained herein, is copyright protected. Any changes to the contents or the publication of extracts of this document is prohibited.

Phoenix Contact reserves the right to register its own intellectual property rights for the product identifications of Phoenix Contact products that are used here. Registration of such intellectual property rights by third parties is prohibited.

Other product identifications may be afforded legal protection, even where they may not be indicated as such.

How to contact us

Internet

Up-to-date information on Phoenix Contact products and our Terms and Conditions can be found on the Internet at:

phoenixcontact.com

Make sure you always use the latest documentation.

It can be downloaded at:

phoenixcontact.net/products

Subsidiaries

If there are any problems that cannot be solved using the documentation, please contact your Phoenix Contact subsidiary.

Subsidiary contact information is available at phoenixcontact.com.

Published by

PHOENIX CONTACT GmbH & Co. KG

Flachmarktstraße 8

32825 Blomberg

GERMANY

PHOENIX CONTACT Development and Manufacturing, Inc.

586 Fulling Mill Road

Middletown, PA 17057

USA

Should you have any suggestions or recommendations for improvement of the contents and layout of our manuals, please send your comments to:

tecdoc@phoenixcontact.com